

FIN



Welcome to Fin.

Fin marks the third and final instalment of my **HomeAge** 'trilogy'.

Similar to Début and Milieu, this box set features 8 of my own artworks, split roughly down the middle, with the second half reimagined in the style of artists who hold significance either historically or personally.

This final collection includes three of the worlds most famous artists from the 20th century in Picasso, Warhol and Lichtenstein, as well as one of the most famous living artists Yayoi Kusama.

Dare I say that this might be my favourite of the three box sets?

Enjoy,

Fin

FinDAC



Layeoja Redux, Fin boxset, 2024

Aubrey Beardsley (1872 - 1898) was an English illustrator and author known for his distinctive black ink drawings, which are often associated with the Art Nouveau movement. Born in Brighton, England, Beardsley's work is characterised by elaborate decorative patterns and a sensuous, decadent style. He was a significant figure in the Aesthetic Movement and contributed to the publication of several important works, including Oscar Wilde's "Salome." Despite his short life, Beardsley's influence on illustration and graphic arts has been profound.



Isolde, 1895
Ink and watercolour

This **HomEage** to my favourite artist of all time, Aubrey Beardsley, was the very first Redux I did back in 2020 when the idea of reimagining my art in the style of others was just beginning.

He was always going to be the first artist I paid **HomEage** to, as we had an 'Isolde' print of his on the wall of our family home when I was growing up. His noble depictions of women in fine clothes with elaborate hair set the tone for my own work, including it being monotone at the start of my career. He also served as the connector between my western and eastern influences.

This version included here has been slightly altered for the upcoming box set, but it's interesting to see where it all started.

I know if I were to do this piece again, it would be considerably different because, as the project has progressed, I've become much more confident in my approach to these pieces and imitating the particular artist's line style.



Child of Seditonaries 3 Redux, Fin boxset, 2024

Jamie Hewlett (1968 -) is a British comic book artist and designer, best known for co-creating the virtual band Gorillaz and the comic series "Tank Girl." Born in Horsham, England, Hewlett's distinctive style blends elements of punk, pop culture, and alternative aesthetics. His work on Gorillaz has garnered international acclaim, with the band's unique visual identity becoming as iconic as its music. Hewlett's innovative approach to multimedia art and storytelling has solidified his place in contemporary art and culture.



The Unfinished Smoker, 2014

Jamie Hewlett is one of my absolute favourite modern artists. His work on projects like Tank Girl and Gorillaz is second to none, and I have numerous prints and books from him at home and in my studio.

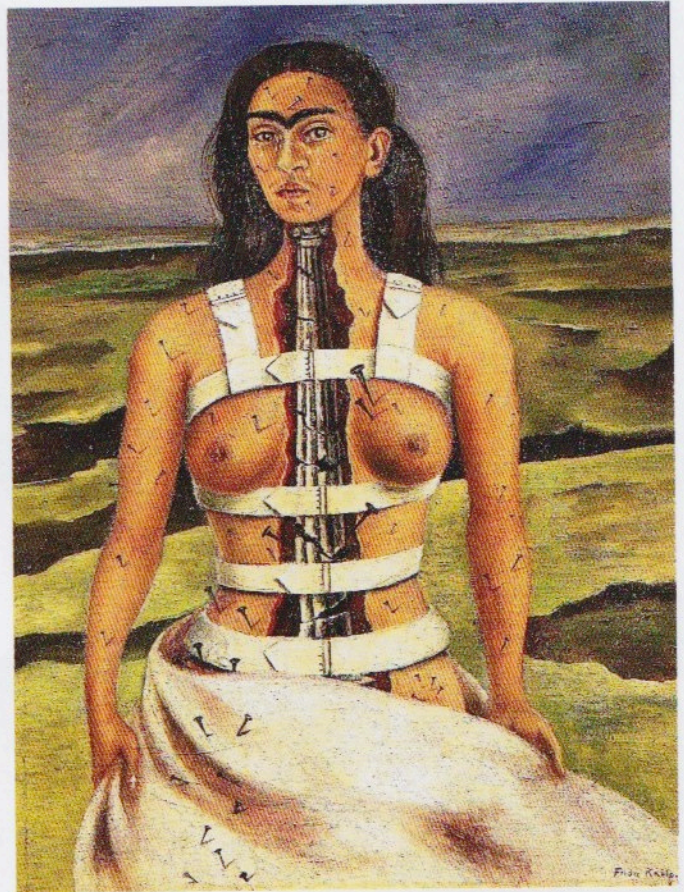
The original artwork 'The Unfinished Smoker,' which is featured in one of those books, I misread as being an homage to Toulouse-Lautrec (there was actually another piece on the same page titled 'Muse to Lautrec'). But that little mistake aside, it still felt like synchronicity to find an artwork from Hewlett that almost perfectly matched my 'Child of Seditonaries' artwork, right down to the cold stare, orange military jacket and big hair.

So instead of a Gorillaz-style mash-up, which is what I was initially intending, I came up with this reinterpretation of that image, and it might just be my favourite in this box set.



Holangi Redux, Fin boxset, 2024

Frida Kahlo (1907 - 1954) was a Mexican painter known for her self-portraits that intricately depicted her personal pain and suffering. Born in Coyoacán, Mexico City, she began painting after a bus accident left her bedridden for months. Her works are characterised by vibrant colours and a folk art style influenced by indigenous Mexican culture. Kahlo's art delves into themes of identity, postcolonialism, gender, class, and race in Mexican society. She is celebrated as a feminist icon and one of Mexico's greatest artists.



The Broken Column, 1944,

Oil on masonite

Museo Dolores Olmedo, Mexico City

This is a piece that's an **HomEage** to both artist and muse, even though they are one and the same. Frida Kahlo is someone I've painted more than once, but the thought of including another depiction of her in my style in this box set felt somewhat reductive. Instead I painted her as she saw, and painted, herself, attempting to mirror her painting style and technique as I did with my Gustav Klimt artwork earlier in the project.

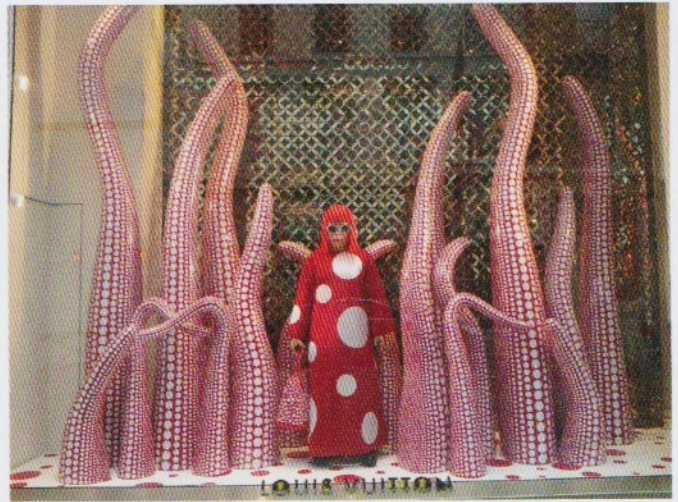
Confined to her bed for long periods due to her spinal injury, she became her main muse, often focusing her portraits on her injuries and pain. This depiction has always been one of the strongest indicators of the constant pain she endured, yet she still sought beauty in it.

As an added touch, I included the colours of the Mexican flag, just as I did when I painted the mural of her in Guadalajara, Mexico in 2018.



Jibo Redux, Fin boxset, 2024

Yayoi Kusama (1929 -) is a Japanese contemporary artist known for her extensive use of polka dots and infinity installations. Born in Matsumoto, Nagano, her work encompasses various media, including painting, sculpture, performance art, and environmental installations. Kusama's art is often described as surreal and avant-garde, reflecting her personal struggles with mental illness. She has been a pioneering figure in the avant-garde movement since the 1960s, influencing artists worldwide with her distinctive style and immersive installations.



Louis Vuitton window display, Bond St, London, 2023
Harrods, London

Pumpkin, 2016
Hirshhorn Museum and Sculpture Garden, Washington DC

Like Frida Kahlo before her, Yayoi Kusama and her personal style are as iconic as her artwork. However, similar to my Keith Haring tribute earlier in the project, trying to integrate her work with mine posed a challenge. The global Louis Vuitton campaign from early last year was pivotal in resolving this.

Seeing the animatronic version of Yayoi in the Bond Street shop window and the enormous figurine at Harrods in person was incredible, sparking the creative idea for this 'resin figurine' artwork.

Adding some simple and playful Yayoi Kusama signature patterns in the background was the only other element needed to pull everything together. I even managed to sneak in one of my own pattern designs too.



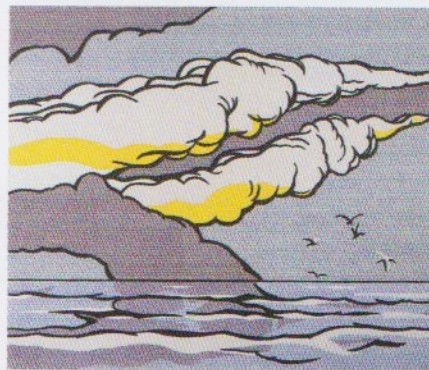




Yehua Redux, Fin boxset, 2024



Roy Lichtenstein (1923 - 1997) was an American pop artist known for his comic strip-style paintings and prints. Born in New York City, Lichtenstein's work was heavily influenced by popular advertising and the comic book style. His use of Ben-Day dots, speech balloons, and primary colours became his trademark. Notable works include "Whaam!" and "Drowning Girl," which challenge traditional distinctions between high and low art. Lichtenstein's art plays with irony and parody, making him a key figure in the pop art movement.



M-Maybe, 1965

Oil and acrylic on canvas. Museum Ludwig, Cologne

Golden trail (Landscape with Seagulls), 1965

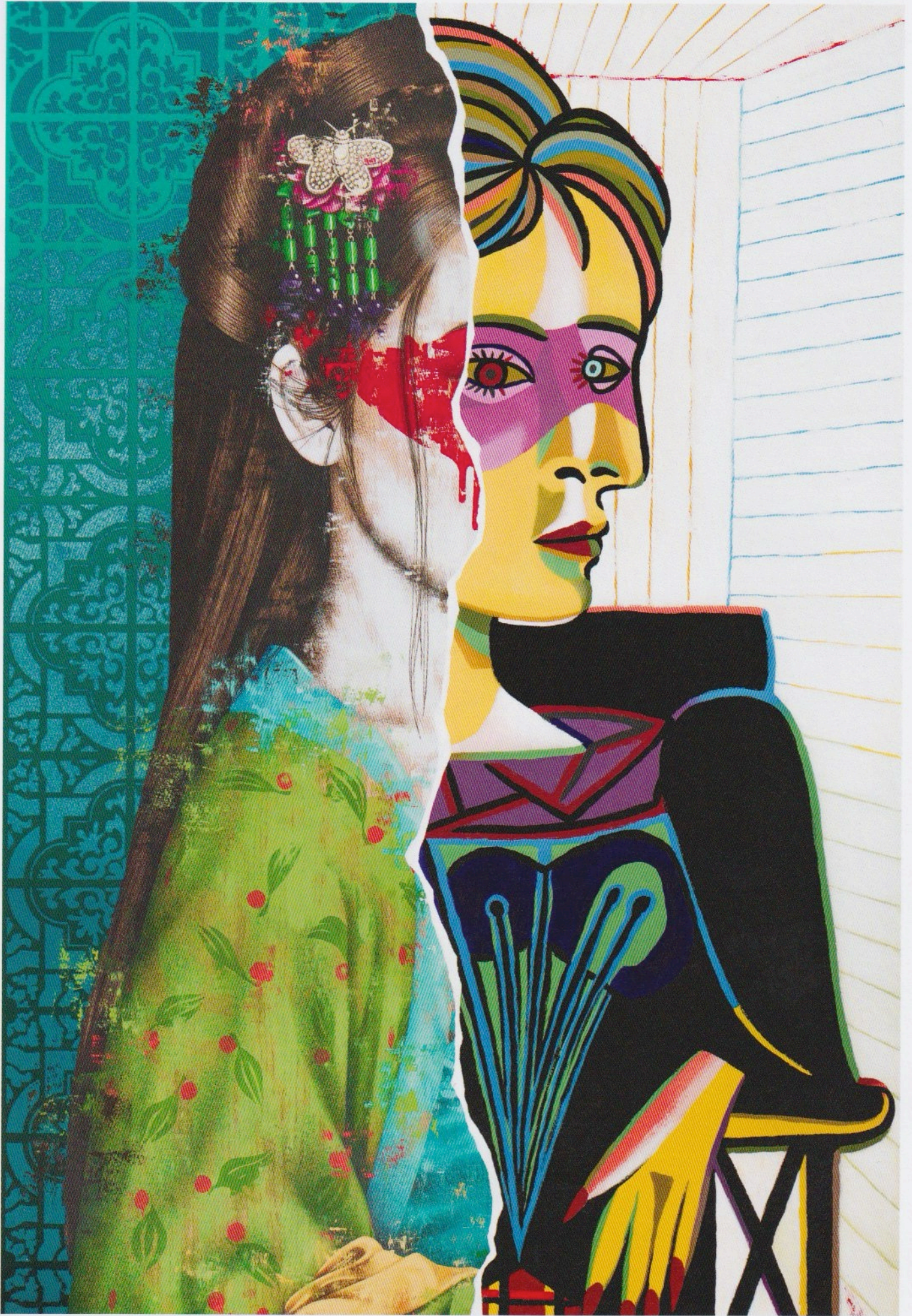
Oil and acrylic on canvas

A tribute to one of the most successful pop artists of all time, Roy Lichtenstein.

On this occasion, I took my lead from the text of his 'M-Maybe' artwork from 1965, rewording it slightly to have more relevance to me and my situation. 'Ironic self-awareness' is how Lichtenstein himself might have put it.

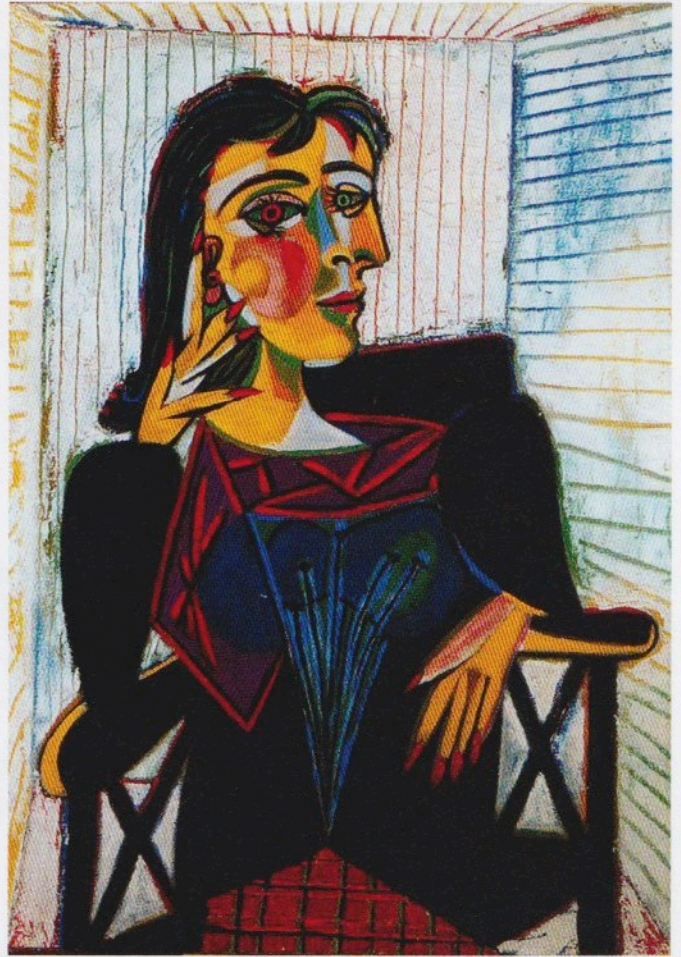
The remainder of the artwork is a mix of elements and ideas from several of his works, including his ubiquitous dot matrix effect (Ben-Day dots) and his primary colours.

Lichtenstein's style is directly linked to the comic books of the late 50s and early 60s, so it was important to ensure my reinterpretation mirrored those times, hence the drastic changes to the face, hair, and clothing.



Meiguoren Redux, Fin boxset, 2024

Pablo Picasso (1881 - 1973) was a Spanish painter, sculptor, printmaker, ceramicist, and stage designer, widely regarded as one of the most influential artists of the 20th century. Born in Málaga, Spain, Picasso co-founded the Cubist movement and developed a wide variety of styles throughout his career. His most famous works include "Les Femmes d'Alger" and "Guernica," which depict the horrors of war. Picasso's innovation in art and his prolific output made him a central figure in modern art history.



Portrait of Dora Maar, 1937

Oil on canvas, Musée Picasso, Paris

No prizes for guessing the artist this time, as his style was (and still is) completely unique - Pablo Picasso. As with some of the previous pieces in this project, this is as much an **HomEage** to the muse as to the artist.

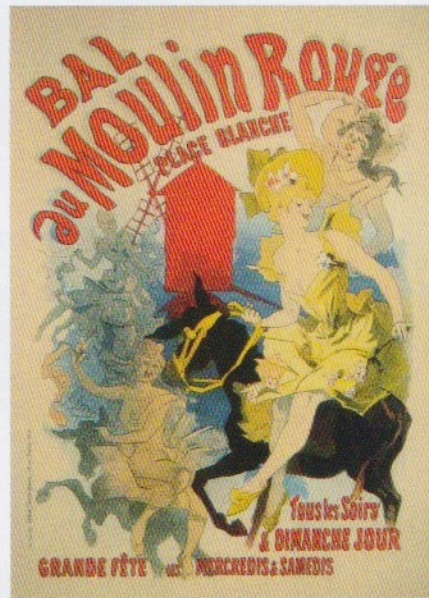
Dora Maar was a photographer and painter, as well as a romantic partner to Picasso. She was the model and muse for two of his most famous paintings.

This **HomEage** is possibly the furthest from my style in the entire collection, but including Picasso was very important as his work had a major impact on the art world and I really wanted to have a crack at something completely outside my comfort zone.



Simchoon Redux, Fin boxset, 2024

Henri de Toulouse-Lautrec (1864 - 1901) was a French painter, printmaker, draughtsman, and illustrator who immersed himself in the vibrant and decadent world of Parisian nightlife. Born in Albi, France, Toulouse-Lautrec is best known for his depictions of the bohemian life of Paris, especially the Montmartre district. His posters for the Moulin Rouge and other cabaret venues brought him considerable fame. Toulouse-Lautrec's work is noted for its bold composition, expressive line work, and insightful portrayals of people.



Cover for issue 1 of L'Estampe originale, 1893

Colour lithograph

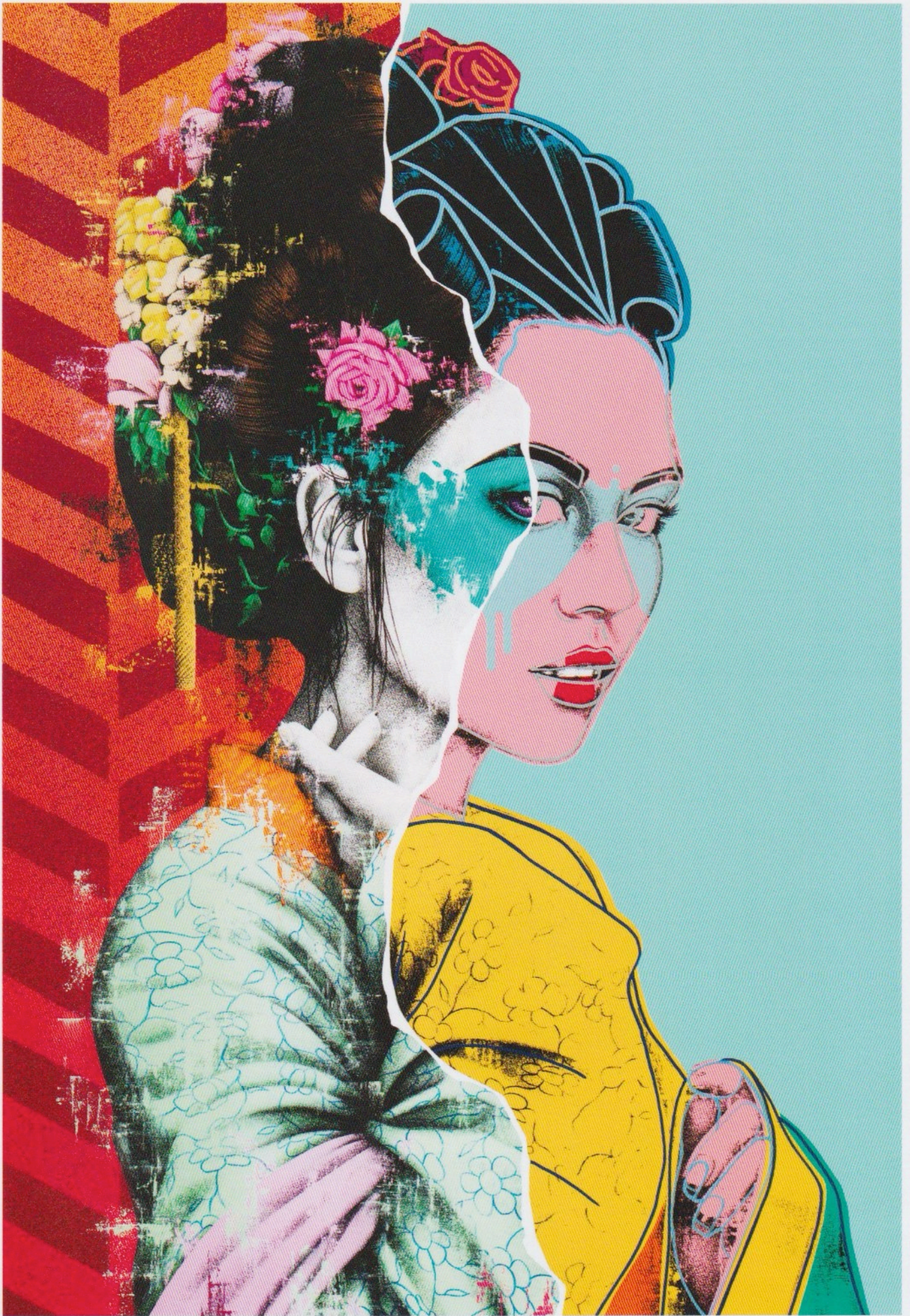
Bal au Moulin Rouge, 1892

Colour lithograph

This piece is the only artwork in the entire collection that is a tribute to an artist, muse, and venue: those being Toulouse-Lautrec, Jane Avril, and the Moulin Rouge.

All of those names are indelibly linked with each other because of Lautrec's dynamic posters, illustrations and paintings which helped to elevate them all to the upper echelons of Paris society.

This **HomeAge** was one that I'd been looking forward to doing since the early days of the project, as reading about Lautrec and the impressionists as a child had me dreaming of living and working as an artist in Paris - sadly something I never quite achieved despite trying.



Yuansu Redux, Fin boxset, 2024



Andy Warhol (1928 - 1987) was an American visual artist and leading figure in the Pop Art movement. Born in Pittsburgh, Pennsylvania, Warhol's works explore the relationship between artistic expression, culture, and advertisement. His most famous works include the "Campbell's Soup Cans" and "Marilyn Diptych" series. Warhol's art employed a variety of media, including hand drawing, painting, printmaking, photography, silk screening, sculpture, and film. He challenged the traditional boundaries of art, making him one of the most influential artists of the 20th century.



Shot Sage Blue Marilyn, 1964

Acrylic and silkscreen on ink on linen

Queen Elizabeth II, 1985

Acrylic and silkscreen on Lenox Museum Board

One of the most successful and influential artists of the 20th century, his almost documentary-style life painted the quintessential artist's life in all its glory and unfortunate gore.

This piece is a redo because I wasn't completely satisfied with the original piece I created as part of the quartet of 1980s New York artists back in 2022.

Being one of my favourite artists, I felt my initial interpretation of his work didn't meet my expectations, and I was unsure about its inclusion in this set. With the added experience of two years doing this type of work, I was able to revisit the original attempt and approach it from a slightly different angle.

These revisions of both colour and technique have made me far happier with the result.

F I N

